



2010 KOMATSU WB97R-5EO F80293

ZM008320

From our yard to yours.

As an Australian family-owned company with global reach, Tilly's are constantly sourcing quality used machinery, from dozers to excavators. We recondition and repair where necessary to provide you with genuine alternatives to purchasing new machines. Speak to one of our experienced team today for the right machine, at the right price, right now.

YEAR
2010

MAKE
KOMATSU

SPECIFICATIONS

KMTWB024J77F80293, 99HP-74KWIVECO F4GE9484F*J601-783758 ENGINE, AIR ROPS CAB, 2008 B.E.M 2300MM 4/1 BUCKET MODEL-42N-833-1800 SERIAL#-00272, SIDESHIFT EXTENDAHOE WITH KOMATSU QUICKHITCH & KOMATSU 600MM GP BUCKET, GOOD 12.5/80-18IMP 12PLY FRONT TYRES & GOOD 16.9-28IND (440/80-28) 12PLY REAR TYRES, LOAD STABILISER SYSTEM, RIDE CONTROL, BURST PROTECTION ON BACKHOE LIFT & STICK CYLINDERS, SHOWING 10113 HOURS, 9.0 TONNE, 5.8L, 2.32W, 3.75H, *CONDITIONS APPLY*

P.O.A.

Contact our Sales team

☎ 07 4633 6000

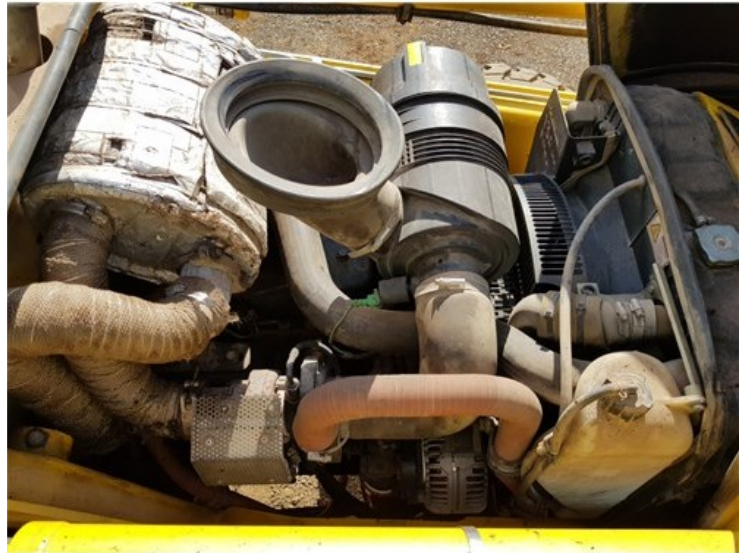
✉ mail@tillys.com.au

🌐 www.tillys.com.au



2010 KOMATSU WB97R-5EO F80293

ZM008320



www.tillys.com.au

